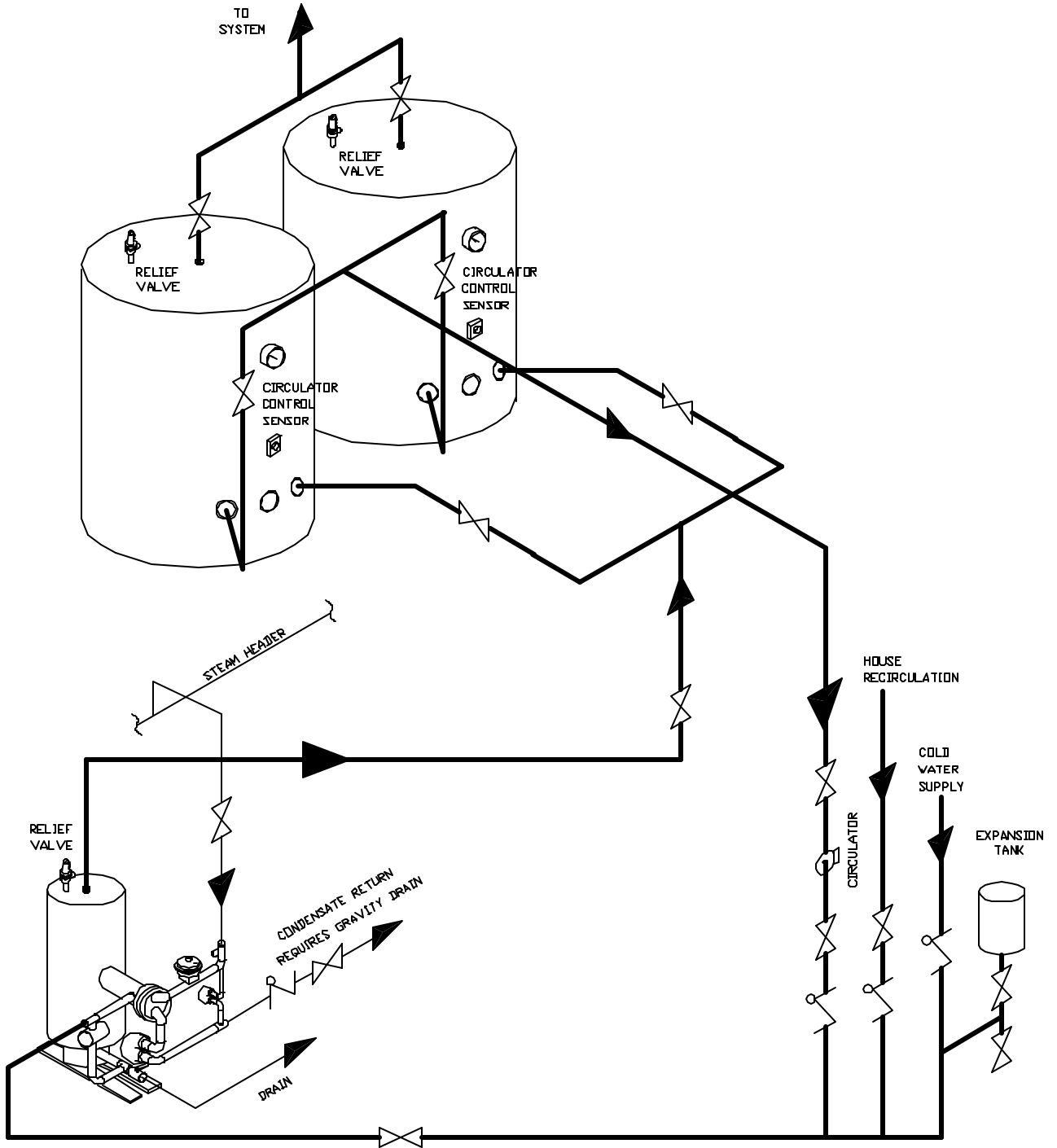




ONE SSH HEATER PARALLEL PIPED TO TWO STORAGE TANKS

| | |
|--|-------------|
| | STOP VALVE |
| | CHECK VALVE |
| | CIRCULATOR |



NOTES: SUGGESTED PIPING DESIGN.
 DESIGNER SHOULD CHECK WITH LOCAL
 CODES TO VERIFY COMPLIANCE.
 PIPE ALL RELIEF VALVES TO DRAIN