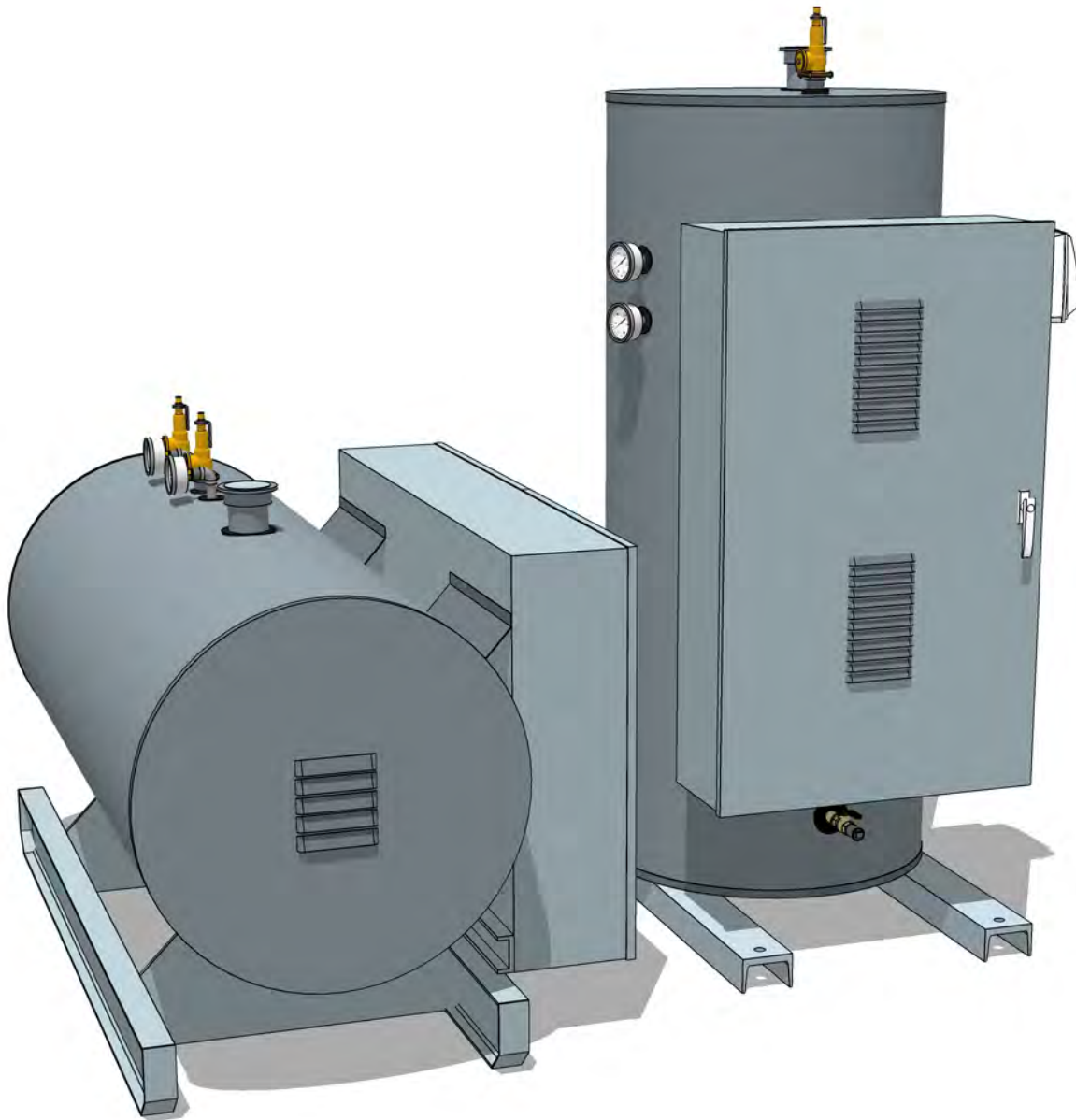


Electric Boilers



Hot Water and Steam Heating *Vertical or Horizontal*



CEMLINE CORPORATION

P.O. BOX 55 CHESWICK, PENNSYLVANIA 15024

Phone: (724) 274-5430

FAX: (724) 274-5448

www.cemline.com

Cemline® Electric Boilers

Standard Equipment

Cemline Electric Boilers are designed for hydronic heating systems and process heating. Cemline Electric Boilers are furnished as a complete factory package for one source responsibility. Installation requires only pipe lines and power leads. We offer many optional extras for applications where such features are desired.

Standard EB Package

Features

| | |
|--|--|
| Storage tank—A.S.M.E. Code Constructed National Board Registered—H or S Stamp | A.S.M.E. Code stamping and registration offer the assurance of quality controlled construction. |
| 3" fiberglass insulation | Prevents heat loss to cut operation costs—meets or exceeds latest ASHRAE standards. |
| 20 Gauge steel jacket with hammertone enamel-painted exterior | Protects insulation & provides neat finished appearance. |
| A.S.M.E. Pressure Relief Valves | Safety feature against excess pressure. |
| Thermometer & Pressure Gauge | Easy to read dials to monitor operating temperature and pressure. |
| Incoloy sheathed immersion | Long life elements of incoloy. Provides ease in field maintenance. Each rod individually removable and replaceable. |
| Standard operating controls | All components necessary for safe-complete operation—all thermostats, high limit resets, contactors, transformer, fusing pilot lights, and low water cut off wired to a NEMA terminal box. |
| Solid State Step Controller | Proportioning type controller with adjustable settings, LED stage indicators, outdoor reset, remote enable/disable and night setback. |
| UL Listing | Boilers meet testing and inspection requirements of Underwriters' Laboratories and are so labeled and listed. |
| Warranty | One year against defects in materials or workmanship. |

Optional Extras Available:

- Circuit breaker
- Fused or non-fused disconnect
- Power meter
- Time clock
- Element watt density to suit customer request
- Alarm bell
- Flow switch
- Outdoor sensor
- BACnet
- Remote Setpoint
- Manual reset low water level cut off
- High pressure cut off
- Ground fault detection
- 4" thick fiberglass insulation
- Indoor/outdoor reset
- Timers
- Safety door interlock
- Remote on/off
- Remote alarm

Electric Boilers

Standard Equipment

Cemline Electric Boilers are furnished with all accessories factory sized and mounted to insure the finest quality and most efficient package.

Tank

Cemline Boilers are constructed and stamped in strict accordance with the latest A.S.M.E. code using pressure vessel quality plate welded by certified welders. Tanks used in the boilers are built in accordance with Section IV or Section I of the A.S.M.E. Code and form H or S certificates are provided. All tanks are registered with the National Board of Boiler Pressure Vessel Inspectors and so certified. Vessels are normally built for 150 psi maximum water working pressure, or 15 psi steam. Boilers can be furnished for up to 150 psi steam working pressure.

Jacket

Cemline Boilers are neatly and attractively covered with a 20 gauge steel jacket over the fiberglass insulation. The jacket protects the insulation, and is professionally painted with superior quality enamel to allow the added advantage of an easy to maintain surface.

Insulation

Cemline Boilers are furnished with 3" thick fiberglass insulation. This high quality insulation has proven to be an extremely reliable means of minimizing heat loss and complies with current ASHRAE Standards.

Base—Support

Vertical heaters are supplied with leg supports with leveling bolts and couplings to receive pipe legs. This provides the option of mounting the unit directly on a floor or raising it with pipe legs to any desired height. Cemline Horizontal Boilers are mounted on structural I-Beam support skids which are engineered to provide correct support for the heater as a permanent base.

Electric Heating Elements

Cemline Boiler heating elements consist of one or more incoloy sheathed removable immersion rods. These rods are grouped together as three phase deltas to achieve required total kilowatt. Each rod contains resistance wire surrounded by an ample thickness of compressed magnesium oxide. Individual rods are removable and replaceable with ordinary hand tools for in the field replacement to insure worry free maintenance of the heater.

Control Circuit System

Cemline Electric Boiler control circuits are equipped with a line voltage to 120 volt isolation transformer to provide 120 volt control. This transformer is fused on the primary side and fused and grounded on the secondary side in accordance with A.S.M.E. Code, National Electric Code, and Underwriters' Laboratories.

High Limit Thermostats or Pressure Switch

Cemline Electric Boilers are provided with built in safety protection against high temperature conditions. Electric boilers are furnished with both an adjustable automatic reset type high limit and a manual reset high limit thermostat with a manual reset button. These thermostats open the control circuit if the temperature of the boiler exceeds the set point. On steam boilers, pressure switches perform the same function if the steam pressure exceeds the desired pressure.

Contactors

Cemline Electric Boilers are equipped with heavy duty magnetic contactors to close and open circuits as required for load control. The contactors are controlled by a solid state step controller.

Final Assembly & Testing

Cemline Electric Boilers are thoroughly tested prior to shipment. All components and workmanship are guaranteed for a period of one year from date of start-up or eighteen months from the date of shipment.

Fuses

Cemline Electric Boilers utilize "Class J" type fuses. Each contactor line is protected by an individual fuse which is designed to interrupt power in the event of an overload condition in that circuit.

Electric Boilers

Standard Equipment (Continued)

Cemline Electric Boilers are furnished as a complete factory package and are UL listed.

Wiring

Cemline Electric Boilers are factory wired, utilizing heat resistant, color coded copper wire. All components are factory wired to a generously sized terminal strip for solderless connections. Heaters furnished with circuit breaker or disconnect switch are factory wired to load side of breaker switch.

Low Water Cut-Off

Cemline Electric Boilers are furnished with float type low water cut-off, wired to open the control circuit on a low water condition.

Electric Control Cabinet

Cemline electric elements and controls are mounted in a NEMA 1 enclosure with key lock door.

Pilot Lights

Pilot lights are supplied to enable the operator to see the status at a glance.

Relief Valves

Cemline Electric Boilers are provided with a A.S.M.E. pressure relief valve. The valve is sized to relieve the total BTU input of the heating elements.

UL Listing

Cemline Electric Boilers meet testing and inspection requirements of Underwriters' Laboratories and are listed and labeled as required by Underwriters' Laboratories.

Thermometer and Pressure Gauge

Cemline Electric Boilers are furnished with a thermometer to monitor vessel temperature and a dial pressure gauge to monitor pressure within the vessel. These gauges are mounted in an easily accessible position so that they may be read from the floor. Steam boilers are furnished with pressure gauge only.

Step Controller

Cemline Electric Boilers are furnished with a solid state step controller. The step controller is programmable to allow for multiple rotation options to promote even wear on the elements. The controller can operate the boiler based upon temperature or outdoor reset. The controller can be configured to run a system pump and has an adjustable night setting to help reduce electrical consumption. Optionally, Cemline can provide remote set point via 4-20 from the building management system or can provide BACnet IP communication.

Steam Boilers

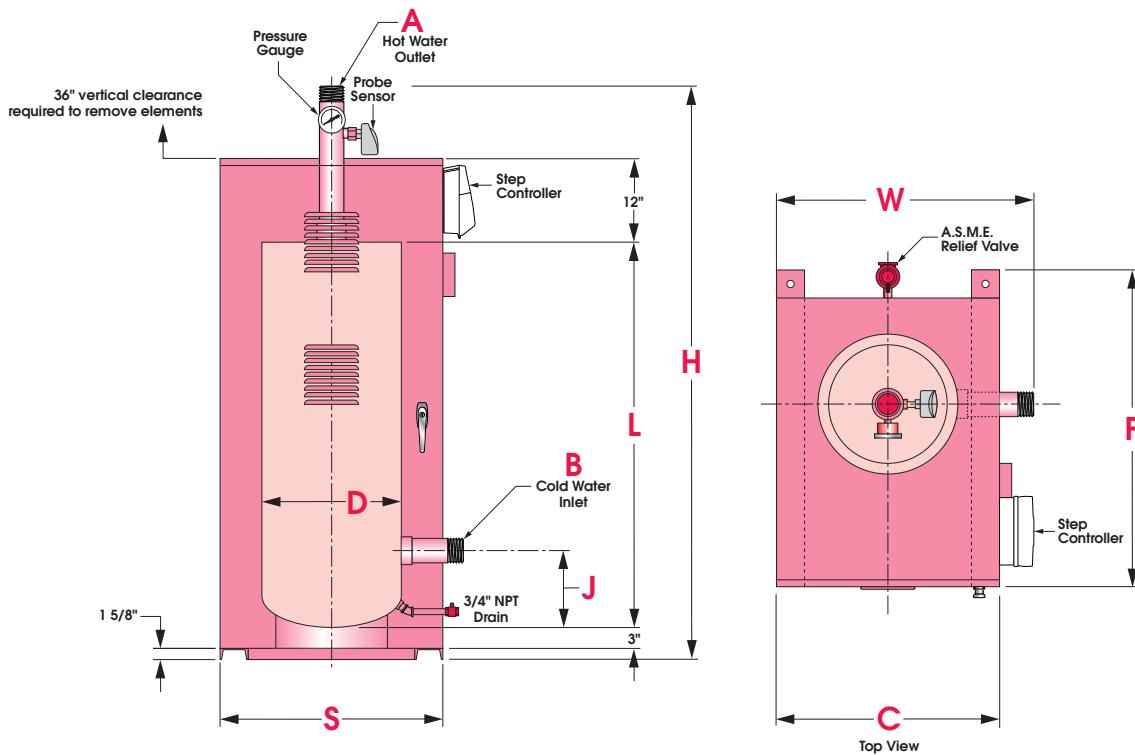
Cemline Electric Steam Boilers operating up to 15# steam are built to Section IV of the A.S.M.E. Code and bear the "H" stamp. Cemline Electric Steam Boilers above 15# steam are built to Section I of the A.S.M.E. Code and bear the "S" stamp. Steam boilers are furnished with gauge glass and water feeder or pump controller.



Hot Water Boilers

Vertical High Capacity - Small Footprint

The dimensions suggested below are well proportioned and suitable for most installations. When building space or other conditions demand, other sizes are readily available. Please consult factory.



| MODEL NUMBER | H | W | C | D | L | F | J | S | A&B |
|--------------|-----|-----|-----|---------|-----|---------|-----|-----|--------|
| VB30ETB | 72" | 23" | 20" | 12 3/4" | 44" | 33 1/2" | 11" | 20" | 3" NPT |
| VB40ETB | 72" | 27" | 24" | 16" | 44" | 36 3/4" | 11" | 24" | 3" NPT |
| VB60ETB | 72" | 31" | 28" | 20" | 44" | 40 3/4" | 11" | 28" | 3" NPT |
| VB80ETB | 72" | 35" | 32" | 24" | 44" | 44 3/4" | 11" | 32" | 3" NPT |

Electric Boilers - Hot Water - 3 Phase Vertical High Capacity - Small Footprint

600V, 480V,
415V, 380V

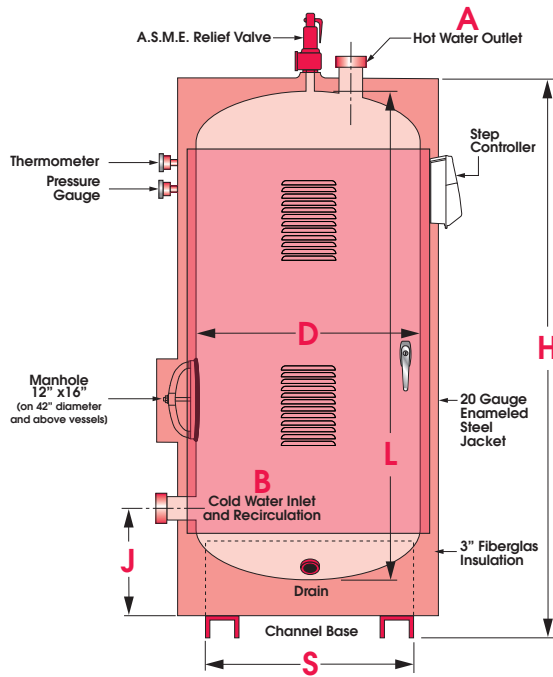
| Model No. | KW | Btu/Hr | Contactors | KW Per Circuit | Steps | KW Per Step | KW Per Element | Total # Elements | 600V 3 Phase Amps | 480V 3 Phase Amps | 415V 3 Phase Amps | 380V 3 Phase Amps |
|------------|-----|-----------|------------|----------------|-------|-------------|----------------|------------------|-------------------|-------------------|-------------------|-------------------|
| VB30ETB12 | 12 | 40,980 | 1 | 12 | 1 | 12 | 12 | 1 | 12 | 14 | 17 | 18 |
| VB30ETB15 | 15 | 51,225 | 1 | 15 | 1 | 15 | 15 | 1 | 14 | 18 | 21 | 23 |
| VB30ETB18 | 18 | 61,470 | 1 | 18 | 1 | 18 | 18 | 1 | 17 | 22 | 25 | 27 |
| VB30ETB20 | 20 | 68,304 | 1 | 20 | 1 | 20 | 20 | 1 | 19 | 24 | 28 | 30 |
| VB30ETB24 | 24 | 81,960 | 2 | 12 | 2 | 12 | 12 | 2 | 23 | 29 | 33 | 37 |
| VB30ETB30 | 30 | 102,450 | 2 | 15 | 2 | 15 | 15 | 2 | 29 | 36 | 42 | 46 |
| VB30ETB36 | 36 | 122,940 | 2 | 18 | 2 | 18 | 18 | 2 | 35 | 43 | 50 | 55 |
| VB30ETB40 | 40 | 136,607 | 2 | 20 | 2 | 20 | 20 | 3 | 39 | 48 | 56 | 61 |
| VB30ETB45 | 45 | 153,675 | 2 | 1@15, 1@30 | 2 | 1@15, 1@30 | 15 | 3 | 43 | 54 | 63 | 68 |
| VB30ETB54 | 54 | 184,410 | 3 | 18 | 3 | 18 | 18 | 3 | 52 | 65 | 75 | 82 |
| VB30ETB60 | 60 | 204,900 | 3 | 20 | 3 | 20 | 20 | 3 | 58 | 72 | 84 | 91 |
| VB30ETB72 | 72 | 245,880 | 3 | 2@18, 1@36 | 3 | 2@18, 1@36 | 18 | 4 | 69 | 87 | 100 | 110 |
| VB30ETB75 | 75 | 256,125 | 3 | 1@15, 2@30 | 3 | 1@15, 2@30 | 15 | 5 | 72 | 90 | 104 | 114 |
| VB30ETB80 | 80 | 273,214 | 4 | 20 | 4 | 20 | 20 | 4 | 77 | 96 | 111 | 123 |
| VB30ETB90 | 90 | 307,350 | 5 | 18 | 5 | 18 | 18 | 5 | 87 | 108 | 125 | 137 |
| VB30ETB100 | 100 | 341,518 | 5 | 20 | 5 | 40 | 20 | 5 | 96 | 120 | 139 | 152 |
| VB30ETB108 | 108 | 368,820 | 3 | 36 | 3 | 36 | 18 | 6 | 104 | 130 | 150 | 164 |
| VB30ETB120 | 120 | 409,800 | 3 | 40 | 3 | 40 | 20 | 6 | 116 | 145 | 167 | 183 |
| VB40ETB144 | 144 | 491,760 | 4 | 36 | 4 | 36 | 18 | 8 | 139 | 173 | 201 | 219 |
| VB40ETB150 | 150 | 512,250 | 5 | 30 | 5 | 30 | 15 | 10 | 145 | 181 | 209 | 228 |
| VB40ETB180 | 180 | 614,700 | 5 | 1@20, 4@40 | 5 | 1@20, 4@40 | 20 | 9 | 173 | 217 | 251 | 274 |
| VB60ETB210 | 210 | 717,150 | 7 | 30 | 7 | 30 | 15 | 14 | 202 | 253 | 292 | 319 |
| VB60ETB240 | 240 | 819,600 | 6 | 40 | 6 | 40 | 20 | 12 | 231 | 289 | 334 | 365 |
| VB60ETB270 | 270 | 922,098 | 8 | 1@18, 7@36 | 8 | 1@18, 7@36 | 18 | 15 | 260 | 325 | 376 | 411 |
| VB60ETB300 | 300 | 1,024,500 | 8 | 1@20, 7@40 | 8 | 1@20, 7@40 | 20 | 15 | 289 | 361 | 418 | 456 |
| VB60ETB320 | 320 | 1,092,857 | 8 | 40 | 8 | 40 | 20 | 16 | 308 | 385 | 446 | 487 |
| VB60ETB360 | 360 | 1,229,400 | 9 | 40 | 9 | 40 | 20 | 18 | 347 | 434 | 501 | 548 |
| VB60ETB400 | 400 | 1,366,072 | 10 | 40 | 10 | 40 | 20 | 20 | 385 | 482 | 557 | 609 |
| VB60ETB440 | 440 | 1,502,679 | 11 | 40 | 11 | 40 | 20 | 22 | 424 | 530 | 613 | 669 |
| VB80ETB480 | 480 | 1,639,200 | 12 | 40 | 8 | 4@40, 4@80 | 20 | 24 | 462 | 578 | 669 | 730 |
| VB80ETB520 | 520 | 1,775,893 | 13 | 40 | 7 | 1@40, 6@80 | 20 | 26 | 501 | 626 | 724 | 791 |
| VB80ETB560 | 560 | 1,912,500 | 14 | 40 | 7 | 80 | 20 | 27 | 539 | 674 | 780 | 852 |
| VB80ETB600 | 600 | 2,049,000 | 15 | 40 | 8 | 1@40, 7@80 | 20 | 30 | 578 | 723 | 836 | 913 |

240V, 208V

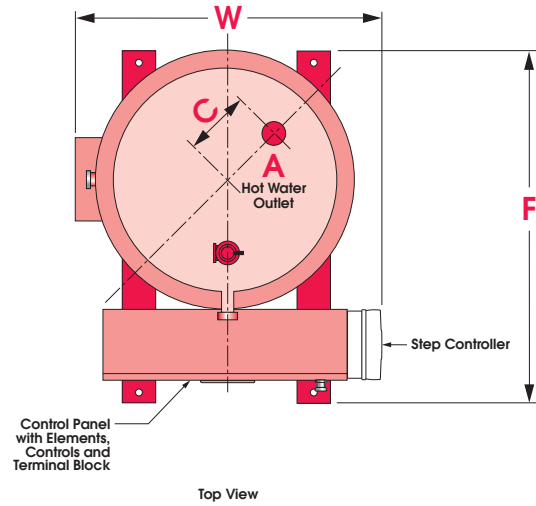
| Model No. | KW | Btu/Hr | Contactors | KW Per Circuit | Steps | KW Per Step | KW Per Element | Total # Elements | 240V 3 Phase Amps | 208V 3 Phase Amps |
|------------|-----|-----------|------------|----------------|-------|-------------|----------------|------------------|-------------------|-------------------|
| VB30ETB12 | 12 | 40,980 | 1 | 12 | 1 | 12 | 12 | 1 | 29 | 33 |
| VB30ETB15 | 15 | 51,225 | 1 | 15 | 1 | 15 | 15 | 1 | 36 | 42 |
| VB30ETB24 | 24 | 81,960 | 2 | 12 | 2 | 12 | 12 | 2 | 58 | 67 |
| VB30ETB30 | 30 | 102,450 | 2 | 15 | 2 | 15 | 15 | 2 | 72 | 83 |
| VB30ETB45 | 45 | 153,675 | 3 | 15 | 3 | 15 | 15 | 3 | 108 | 125 |
| VB30ETB60 | 60 | 204,900 | 4 | 15 | 4 | 15 | 15 | 4 | 145 | 167 |
| VB30ETB75 | 75 | 256,125 | 5 | 15 | 5 | 15 | 15 | 5 | 181 | 208 |
| VB30ETB90 | 90 | 307,366 | 6 | 15 | 6 | 15 | 15 | 6 | 217 | 250 |
| VB30ETB105 | 105 | 358,594 | 7 | 15 | 7 | 15 | 15 | 7 | 253 | 292 |
| VB30ETB120 | 120 | 409,800 | 8 | 15 | 8 | 15 | 15 | 8 | 289 | 333 |
| VB40ETB150 | 150 | 512,250 | 10 | 15 | 5 | 30 | 15 | 10 | 361 | 417 |
| VB40ETB180 | 180 | 614,700 | 12 | 15 | 6 | 30 | 15 | 12 | 434 | 500 |
| VB60ETB210 | 210 | 717,150 | 14 | 15 | 7 | 30 | 15 | 14 | 506 | 583 |
| VB60ETB240 | 240 | 819,600 | 16 | 15 | 8 | 30 | 15 | 16 | 578 | 666 |
| VB60ETB270 | 270 | 922,098 | 18 | 15 | 9 | 30 | 15 | 18 | 650 | 750 |
| VB60ETB300 | 300 | 1,024,500 | 20 | 15 | 10 | 30 | 15 | 20 | 723 | 833 |

Hot Water Boilers

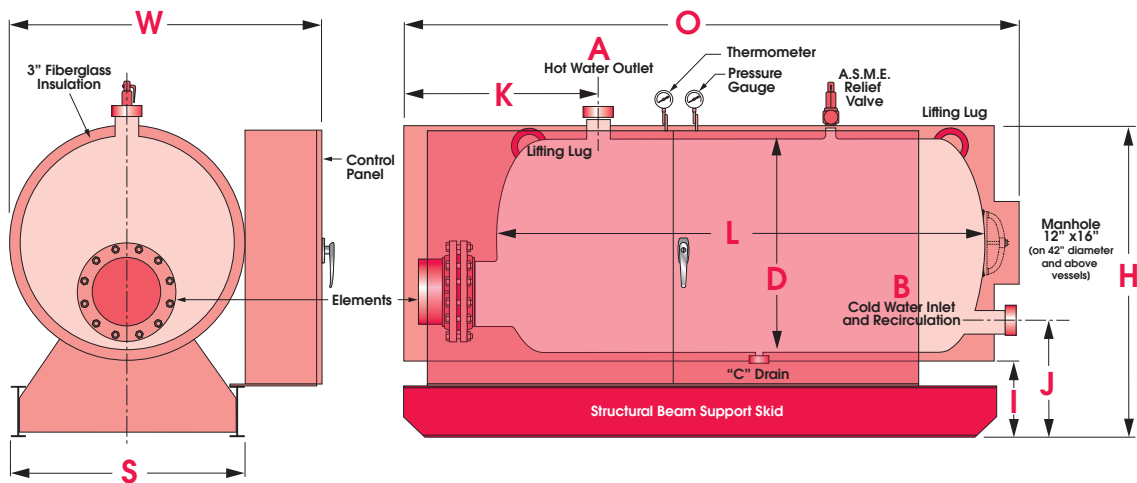
Classic Vertical and Horizontal



The dimensions suggested below are well proportioned and suitable for most installations. When building space or other conditions demand, other sizes are readily available. Please consult factory.



| MODEL NUMBER | H | W | F | D | L | J | C | S | A & B |
|--------------|---------|-----|-----|-----|-----|---------|-----|-----|------------|
| VB30EHB | 37 1/2" | 28" | 28" | 16" | 30" | 13 1/2" | 4" | 14" | 1-1/2" NPT |
| VB40EHB | 55 1/2" | 28" | 28" | 16" | 48" | 13 1/2" | 4" | 14" | 2-1/2" NPT |
| VB120EHB | 70 1/2" | 38" | 36" | 24" | 63" | 17 1/2" | 6" | 18" | 3" NPT |
| VB200EHB | 78 1/2" | 42" | 42" | 30" | 72" | 19 1/2" | 8" | 24" | 4" FLG. |
| VB300FTB | 79 1/2" | 48" | 50" | 36" | 72" | 21 1/2" | 8" | 30" | 5" FLG. |
| VB450FTB | 97 1/2" | 56" | 54" | 42" | 90" | 25 1/2" | 10" | 36" | 6" FLG. |
| VB600FTB | 91 1/2" | 60" | 60" | 48" | 84" | 26 1/2" | 10" | 42" | 6" FLG. |
| VB750FTB | 91 1/2" | 66" | 66" | 54" | 84" | 27 1/2" | 10" | 48" | 6" FLG. |
| VB950FTB | 91 1/2" | 72" | 72" | 60" | 84" | 29 1/2" | 10" | 54" | 8" FLG. |



| MODEL NUMBER | H | W | O | D | L | K | S | I | J | C | A&B |
|--------------|-----|-----|------|-----|-----|-----|-----|-----|-----|--------|------------|
| HB30EHB | 30" | 36" | 51" | 16" | 30" | 21" | 20" | 10" | 16" | 1" | 1 1/2" NPT |
| HB40EHB | 30" | 36" | 60" | 16" | 48" | 21" | 20" | 10" | 16" | 1" | 2 1/2" NPT |
| HB120EHB | 38" | 43" | 93" | 24" | 60" | 44" | 28" | 10" | 16" | 1" | 3" NPT |
| HB200EHB | 44" | 49" | 93" | 30" | 72" | 44" | 34" | 10" | 18" | 1" | 4" FLG. |
| HB300EHB | 50" | 55" | 93" | 36" | 72" | 44" | 40" | 10" | 19" | 1 1/2" | 5" FLG. |
| HB450FTB | 56" | 61" | 108" | 42" | 90" | 44" | 46" | 10" | 19" | 1 1/2" | 6" FLG. |
| HB600FTB | 62" | 67" | 102" | 48" | 84" | 44" | 52" | 10" | 19" | 1 1/2" | 6" FLG. |
| HB750FTB | 68" | 73" | 102" | 54" | 84" | 44" | 58" | 10" | 19" | 1 1/2" | 6" FLG. |
| HB950FTB | 74" | 79" | 102" | 60" | 84" | 44" | 64" | 10" | 24" | 1 1/2" | 8" FLG. |

Electric Boilers - Hot Water - 3 Phase Classic

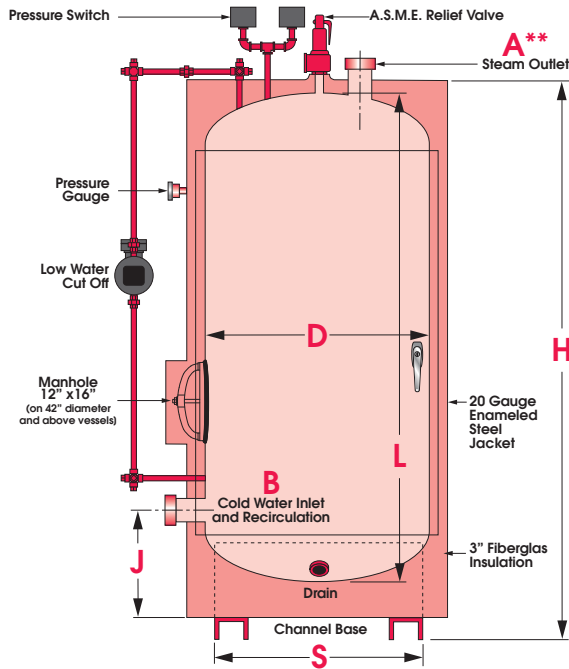
600V, 480V,
415V, 380V

| Model No. | KW | Btu/Hr | Circuits | KW Per Circuit | Steps | KW Per Step | KW Per Element | Total # Elements | 600V 3 Phase Amps | 480V 3 Phase Amps | 415V 3 Phase Amps | 380V 3 Phase Amps |
|------------|------|-----------|----------|----------------|-------|--------------|----------------|------------------|-------------------|-------------------|-------------------|-------------------|
| B30EHB12 | 12 | 40,980 | 1 | 12 | 1 | 12 | 4 | 3 | 12 | 14 | 17 | 18 |
| B30EHB15 | 15 | 51,225 | 1 | 15 | 1 | 15 | 5 | 3 | 14 | 18 | 21 | 23 |
| B30EHB18 | 18 | 61,470 | 1 | 18 | 1 | 18 | 6 | 3 | 17 | 22 | 25 | 27 |
| B30EHB24 | 24 | 81,960 | 2 | 12 | 2 | 12 | 4 | 6 | 23 | 29 | 33 | 37 |
| B30EHB27 | 27 | 92,205 | 2 | 13.5 | 2 | 13.5 | 4.5 | 6 | 26 | 33 | 38 | 41 |
| B30EHB30 | 30 | 102,450 | 2 | 15 | 2 | 15 | 5 | 6 | 29 | 36 | 42 | 46 |
| B30EHB36 | 36 | 122,940 | 2 | 18 | 2 | 18 | 6 | 6 | 35 | 43 | 50 | 55 |
| B30EHB40.5 | 40.5 | 138,308 | 3 | 13.5 | 3 | 13.5 | 4.5 | 9 | 39 | 49 | 56 | 62 |
| B30EHB45 | 45 | 153,675 | 3 | 15 | 3 | 15 | 5 | 9 | 43 | 54 | 63 | 68 |
| B30EHB54 | 54 | 184,410 | 3 | 18 | 3 | 18 | 6 | 9 | 52 | 65 | 75 | 82 |
| B40EHB60 | 60 | 204,900 | 4 | 15 | 4 | 15 | 5 | 12 | 58 | 72 | 84 | 91 |
| B40EHB72 | 72 | 245,880 | 4 | 18 | 4 | 18 | 6 | 12 | 69 | 87 | 100 | 110 |
| B40EHB75 | 75 | 256,125 | 5 | 15 | 5 | 15 | 5 | 15 | 72 | 90 | 104 | 114 |
| B40EHB81 | 81 | 276,615 | 5 | 3@15, 2@18 | 5 | 3@15, 2@18 | 5 & 6 | 15 | 78 | 98 | 113 | 123 |
| B40EHB90 | 90 | 307,350 | 5 | 18 | 5 | 18 | 6 | 15 | 87 | 108 | 125 | 137 |
| B40EHB96 | 96 | 327,840 | 6 | 4@18, 2@12 | 6 | 4@18, 2@12 | 6 & 4 | 18 | 92 | 116 | 134 | 146 |
| B40EHB108 | 108 | 368,820 | 6 | 18 | 6 | 18 | 6 | 18 | 104 | 130 | 150 | 164 |
| B120EHB120 | 120 | 409,800 | 7 | 6@18, 1@12 | 7 | 6@18, 1@12 | 10 | 12 | 116 | 145 | 167 | 183 |
| B120EHB144 | 144 | 491,760 | 8 | 18 | 8 | 18 | 6 | 24 | 139 | 173 | 201 | 219 |
| B120EHB150 | 150 | 512,250 | 5 | 30 | 5 | 30 | 10 | 15 | 145 | 181 | 209 | 228 |
| B200EHB180 | 180 | 614,700 | 6 | 30 | 6 | 30 | 10 | 18 | 173 | 217 | 251 | 274 |
| B200EHB210 | 210 | 717,150 | 7 | 30 | 7 | 30 | 10 | 21 | 202 | 253 | 292 | 319 |
| B300EHB240 | 240 | 819,600 | 8 | 30 | 8 | 30 | 10 | 24 | 231 | 289 | 334 | 365 |
| B300EHB300 | 300 | 1,024,500 | 10 | 30 | 10 | 30 | 10 | 30 | 289 | 361 | 418 | 456 |
| B300FB330 | 330 | 1,126,950 | 11 | 30 | 11 | 30 | 10 | 33 | 318 | 397 | 460 | 502 |
| B300FB360 | 360 | 1,229,400 | 12 | 30 | 12 | 30 | 10 | 36 | 347 | 434 | 501 | 548 |
| B300FB390 | 390 | 1,331,850 | 13 | 30 | 13 | 30 | 10 | 39 | 376 | 470 | 543 | 593 |
| B300FB420 | 420 | 1,434,300 | 14 | 30 | 14 | 30 | 10 | 42 | 405 | 506 | 585 | 639 |
| B300FB450 | 450 | 1,536,750 | 15 | 30 | 15 | 30 | 10 | 45 | 434 | 542 | 627 | 685 |
| B450FB480 | 480 | 1,639,200 | 16 | 30 | 16 | 30 | 10 | 48 | 462 | 578 | 669 | 730 |
| B450FB540 | 540 | 1,844,100 | 18 | 30 | 9 | 60 | 10 | 54 | 520 | 650 | 752 | 821 |
| B450FB600 | 600 | 2,049,000 | 20 | 30 | 10 | 60 | 10 | 60 | 578 | 723 | 836 | 913 |
| B450FB660 | 660 | 2,253,900 | 22 | 30 | 11 | 60 | 10 | 66 | 636 | 795 | 919 | 1004 |
| B600FB720 | 720 | 2,458,800 | 24 | 30 | 12 | 60 | 10 | 72 | 694 | 867 | 1003 | 1095 |
| B600FB810 | 810 | 2,766,150 | 27 | 30 | 14 | 13@60, 1@30 | 10 | 81 | 780 | 975 | 1128 | 1232 |
| B600FB900 | 900 | 3,073,500 | 30 | 30 | 15 | 60 | 10 | 90 | 867 | 1084 | 1254 | 1369 |
| B750FB1080 | 1080 | 3,688,200 | 36 | 30 | 18 | 60 | 10 | 108 | 1040 | 1301 | 1504 | 1643 |
| B750FB1260 | 1260 | 4,302,900 | 42 | 30 | 21 | 60 | 10 | 126 | 1214 | 1517 | 1755 | 1917 |
| B750FB1440 | 1440 | 4,917,600 | 48 | 30 | 24 | 60 | 10 | 144 | 1387 | 1734 | 2006 | 2190 |
| B750FB1560 | 1560 | 5,327,400 | 52 | 30 | 24 | 20@60, 4@90 | 10 | 156 | 1503 | 1879 | 2173 | 2373 |
| B950FB1680 | 1680 | 5,732,200 | 56 | 30 | 24 | 16@60, 8@90 | 10 | 168 | 1618 | 2023 | 2340 | 2556 |
| B950FB1800 | 1800 | 6,147,000 | 60 | 30 | 24 | 12@60, 12@90 | 10 | 180 | 1734 | 2168 | 2507 | 2738 |
| B950FB2040 | 2040 | 6,966,600 | 68 | 30 | 24 | 4@60, 20@90 | 10 | 204 | 1965 | 2457 | 2841 | 3103 |

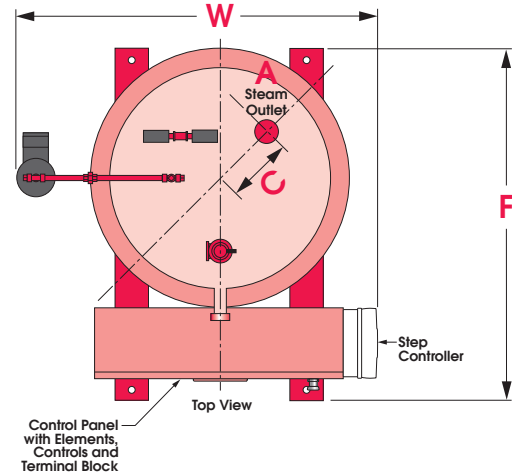
240V, 208V

| Model No. | KW | Btu/Hr | Circuits | KW Per Circuits | Steps | KW Per Step | KW Per Element | Total # Elements | 240V 3 Phase Amps | 208V 3 Phase Amps |
|------------|------|-----------|----------|-----------------|-------|-------------|----------------|------------------|-------------------|-------------------|
| B30EHB12 | 12 | 40,980 | 1 | 12 | 1 | 12 | 4 | 3 | 29 | 33 |
| B30EHB15 | 15 | 51,225 | 1 | 15 | 1 | 15 | 5 | 3 | 36 | 42 |
| B30EHB18 | 18 | 61,470 | 1 | 18 | 1 | 18 | 6 | 3 | 43 | 50 |
| B30EHB24 | 24 | 81,960 | 2 | 12 | 2 | 12 | 4 | 6 | 58 | 67 |
| B30EHB27 | 27 | 92,205 | 2 | 13.5 | 2 | 13.5 | 4.5 | 6 | 65 | 75 |
| B30EHB30 | 30 | 102,450 | 2 | 15 | 2 | 15 | 5 | 6 | 72 | 83 |
| B30EHB36 | 36 | 122,940 | 2 | 18 | 2 | 18 | 6 | 6 | 87 | 100 |
| B30EHB40.5 | 40.5 | 138,308 | 3 | 13.5 | 3 | 13.5 | 4.5 | 9 | 98 | 113 |
| B30EHB45 | 45 | 153,675 | 3 | 15 | 3 | 15 | 5 | 9 | 108 | 125 |
| B30EHB54 | 54 | 184,410 | 3 | 18 | 3 | 18 | 6 | 9 | 130 | 150 |
| B40EHB60 | 60 | 204,900 | 4 | 15 | 4 | 15 | 5 | 12 | 145 | 167 |
| B40EHB72 | 72 | 245,880 | 4 | 18 | 4 | 18 | 6 | 12 | 173 | 200 |
| B40EHB75 | 75 | 256,125 | 5 | 15 | 5 | 15 | 5 | 15 | 181 | 208 |
| B40EHB81 | 81 | 276,615 | 5 | 3@15, 2@18 | 5 | 3@15, 2@18 | 5 & 6 | 15 | 195 | 225 |
| B40EHB90 | 90 | 307,350 | 5 | 18 | 5 | 18 | 6 | 15 | 217 | 250 |
| B40EHB96 | 96 | 327,840 | 6 | 4@18, 2@12 | 6 | 4@18, 2@12 | 6 & 4 | 18 | 231 | 266 |
| B40EHB108 | 108 | 368,820 | 6 | 18 | 6 | 18 | 6 | 18 | 260 | 300 |
| B120EHB120 | 120 | 409,800 | 7 | 6@18, 1@12 | 7 | 6@18, 1@12 | 6 & 4 | 21 | 289 | 333 |
| B120EHB144 | 144 | 491,760 | 8 | 18 | 8 | 18 | 6 | 24 | 347 | 400 |
| B120EHB150 | 150 | 512,250 | 9 | 7@18, 2@12 | 9 | 7@18, 2@12 | 6 & 4 | 27 | 361 | 417 |
| B120EHB180 | 180 | 614,700 | 10 | 18 | 10 | 18 | 6 | 30 | 434 | 500 |
| B200FB210 | 210 | 717,150 | 12 | 11@18, 1@12 | 12 | 11@18, 1@12 | 6 & 4 | 36 | 506 | 583 |
| B300FB240 | 240 | 819,600 | 16 | 12@18, 2@12 | 16 | 12@18, 2@12 | 6 & 4 | 48 | 578 | 666 |
| B450FB300 | 300 | 1,024,500 | 18 | 14@18, 4@12 | 9 | 7@36, 2@24 | 6 & 4 | 54 | 723 | 833 |

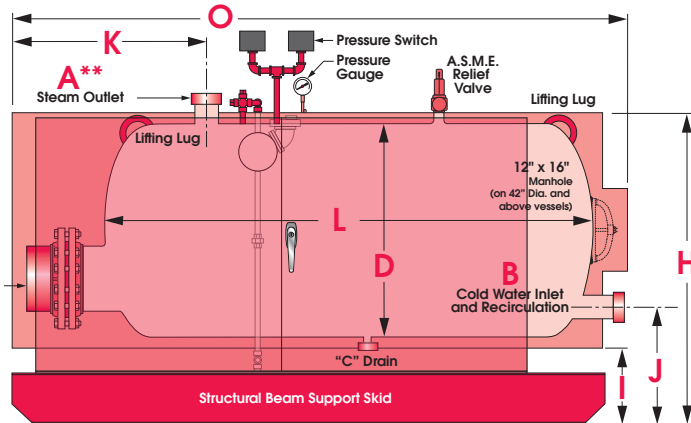
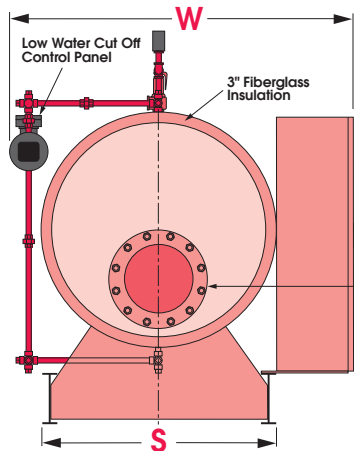
Steam Boilers Vertical and Horizontal



The dimensions suggested below are well proportioned and suitable for most installations. When building space or other conditions demand, other sizes are readily available. Please consult factory.



| MODEL NUMBER | H | W | F | D | L | J | C | S | B |
|--------------|---------|-----|-----|-----|-----|---------|-----|-----|----------|
| VB30EHB | 37 1/2" | 28" | 28" | 16" | 30" | 13 1/2" | 4" | 14" | 1/2" NPT |
| VB40EHB | 55 1/2" | 28" | 28" | 16" | 48" | 13 1/2" | 4" | 14" | 1/2" NPT |
| VB120EHB | 70 1/2" | 38" | 36" | 24" | 63" | 17 1/2" | 6" | 18" | 1/2" NPT |
| VB200EHB | 78 1/2" | 42" | 42" | 30" | 72" | 19 1/2" | 8" | 24" | 1/2" NPT |
| VB300FTB | 79 1/2" | 48" | 50" | 36" | 72" | 21 1/2" | 8" | 30" | 1/2" NPT |
| VB450FTB | 97 1/2" | 56" | 54" | 42" | 90" | 25 1/2" | 10" | 36" | 3/4" NPT |
| VB600FTB | 91 1/2" | 60" | 60" | 48" | 84" | 26 1/2" | 10" | 42" | 3/4" NPT |
| VB750FTB | 91 1/2" | 66" | 66" | 54" | 84" | 27 1/2" | 10" | 48" | 1" NPT |
| VB950FTB | 91 1/2" | 72" | 72" | 60" | 84" | 29 1/2" | 10" | 54" | 1" NPT |



| MODEL NUMBER | H | W | O | D | L | K | S | I | J | C | B |
|--------------|-----|-----|------|-----|-----|-----|-----|-----|-----|--------|----------|
| HB30EHB | 30" | 36" | 51" | 16" | 30" | 21" | 20" | 10" | 16" | 1" | 1/2" NPT |
| HB40EHB | 30" | 36" | 60" | 16" | 48" | 21" | 20" | 10" | 16" | 1" | 1/2" NPT |
| HB120EHB | 38" | 51" | 93" | 24" | 60" | 44" | 28" | 10" | 16" | 1" | 1/2" NPT |
| HB200EHB | 44" | 57" | 93" | 30" | 72" | 44" | 34" | 10" | 18" | 1" | 1/2" NPT |
| HB300EHB | 50" | 63" | 93" | 36" | 72" | 44" | 40" | 10" | 19" | 1 1/2" | 1/2" NPT |
| HB450FTB | 56" | 69" | 108" | 42" | 90" | 44" | 46" | 10" | 19" | 1 1/2" | 3/4" NPT |
| HB600FTB | 62" | 75" | 102" | 48" | 84" | 44" | 52" | 10" | 19" | 1 1/2" | 3/4" NPT |
| HB750FTB | 68" | 81" | 102" | 54" | 84" | 44" | 58" | 10" | 19" | 1 1/2" | 1" NPT |
| HB950FTB | 74" | 87" | 102" | 60" | 84" | 44" | 64" | 10" | 24" | 1 1/2" | 1" NPT |

** Dimension A is sized to suit generated steam capacity.

Electric Boilers - Steam - 3 Phase

600V, 480V,
415V, 380V

| Model No. | KW | Btu/Hr | Steam #/Hr | Circuits | KW Per Circuit | Steps | KW Per Step | KW Per Element | Total # Elements | 480V 3 Phase Amps | 415V 3 Phase Amps | 380V 3 Phase Amps |
|-------------|------|-----------|------------|----------|----------------|-------|--------------|----------------|------------------|-------------------|-------------------|-------------------|
| B30EHB12 | 12 | 40,980 | 42 | 1 | 12 | 1 | 12 | 4 | 3 | 14 | 17 | 18 |
| B30EHB15 | 15 | 51,225 | 52 | 1 | 15 | 1 | 15 | 5 | 3 | 18 | 21 | 23 |
| B30EHB18 | 18 | 61,470 | 63 | 1 | 18 | 1 | 18 | 6 | 3 | 22 | 25 | 27 |
| B30EHB24 | 24 | 81,960 | 84 | 2 | 12 | 2 | 12 | 4 | 6 | 29 | 33 | 37 |
| B30EHB27 | 27 | 92,205 | 94 | 2 | 13.5 | 2 | 13.5 | 4.5 | 6 | 33 | 38 | 41 |
| B30EHB30 | 30 | 102,450 | 105 | 2 | 15 | 2 | 15 | 5 | 6 | 36 | 42 | 46 |
| B30EHB36 | 36 | 122,940 | 126 | 2 | 18 | 2 | 18 | 6 | 6 | 43 | 50 | 55 |
| B30EHB40.5 | 40.5 | 138,308 | 142 | 3 | 13.5 | 3 | 13.5 | 4.5 | 9 | 49 | 56 | 62 |
| B30EHB45 | 45 | 153,675 | 157 | 3 | 15 | 3 | 15 | 5 | 9 | 54 | 63 | 68 |
| B30EHB54 | 54 | 184,410 | 189 | 3 | 18 | 3 | 18 | 6 | 9 | 65 | 75 | 82 |
| B40EHB60 | 60 | 204,900 | 210 | 4 | 15 | 4 | 15 | 5 | 12 | 72 | 84 | 91 |
| B40EHB72 | 72 | 245,880 | 252 | 4 | 18 | 4 | 18 | 6 | 12 | 87 | 100 | 110 |
| B40EHB75 | 75 | 256,125 | 262 | 5 | 15 | 5 | 15 | 5 | 15 | 90 | 104 | 114 |
| B40EHB81 | 81 | 276,615 | 283 | 5 | 3@15, 2@18 | 5 | 3@15, 2@18 | 5 & 6 | 15 | 98 | 113 | 123 |
| B40EHB90 | 90 | 307,350 | 315 | 5 | 18 | 5 | 18 | 6 | 15 | 108 | 125 | 137 |
| B40EHB96 | 96 | 327,840 | 336 | 6 | 4@18, 2@12 | 6 | 4@18, 2@12 | 6 & 4 | 18 | 116 | 134 | 146 |
| B40EHB108 | 108 | 368,820 | 378 | 6 | 18 | 6 | 18 | 6 | 18 | 130 | 150 | 164 |
| B120EHB120 | 120 | 409,800 | 420 | 7 | 6@18, 1@12 | 7 | 6@18, 1@12 | 10 | 12 | 145 | 167 | 183 |
| B120EHB144 | 144 | 491,760 | 504 | 8 | 18 | 8 | 18 | 6 | 24 | 173 | 201 | 219 |
| B120EHB150 | 150 | 512,250 | 525 | 5 | 30 | 5 | 30 | 10 | 15 | 181 | 209 | 228 |
| B200EHB180 | 180 | 614,700 | 630 | 6 | 30 | 6 | 30 | 10 | 18 | 217 | 251 | 274 |
| B200EHB210 | 210 | 717,150 | 735 | 7 | 30 | 7 | 30 | 10 | 21 | 253 | 292 | 319 |
| B300EHB240 | 240 | 819,600 | 840 | 8 | 30 | 8 | 30 | 10 | 24 | 289 | 334 | 365 |
| B300EHB300 | 300 | 1,024,500 | 1050 | 10 | 30 | 10 | 30 | 10 | 30 | 361 | 418 | 456 |
| B300FTB330 | 330 | 1,126,950 | 1162 | 11 | 30 | 11 | 30 | 10 | 33 | 397 | 460 | 502 |
| B300FTB360 | 360 | 1,229,400 | 1260 | 12 | 30 | 12 | 30 | 10 | 36 | 434 | 501 | 548 |
| B300FTB390 | 390 | 1,331,850 | 1373 | 13 | 30 | 13 | 30 | 10 | 39 | 470 | 543 | 593 |
| B300FTB420 | 420 | 1,434,300 | 1470 | 14 | 30 | 14 | 30 | 10 | 42 | 506 | 585 | 639 |
| B300FTB450 | 450 | 1,536,750 | 1584 | 15 | 30 | 15 | 30 | 10 | 45 | 542 | 627 | 685 |
| B450FTB480 | 480 | 1,639,200 | 1680 | 16 | 30 | 16 | 30 | 10 | 48 | 578 | 669 | 730 |
| B450FTB540 | 540 | 1,844,100 | 1890 | 18 | 30 | 9 | 60 | 10 | 54 | 650 | 752 | 821 |
| B450FTB600 | 600 | 2,049,000 | 2100 | 20 | 30 | 10 | 60 | 10 | 60 | 723 | 836 | 913 |
| B450FTB660 | 660 | 2,253,900 | 2310 | 22 | 30 | 11 | 60 | 10 | 66 | 795 | 919 | 1004 |
| B600FTB720 | 720 | 2,458,800 | 2520 | 24 | 30 | 12 | 60 | 10 | 72 | 867 | 1003 | 1095 |
| B600FTB810 | 810 | 2,766,150 | 2850 | 27 | 30 | 14 | 13@60, 1@30 | 10 | 81 | 975 | 1128 | 1232 |
| B600FTB900 | 900 | 3,073,500 | 3150 | 30 | 30 | 15 | 60 | 10 | 90 | 1084 | 1254 | 1369 |
| B750FTB1080 | 1080 | 3,688,200 | 3780 | 36 | 30 | 18 | 60 | 10 | 108 | 1301 | 1504 | 1643 |
| B750FTB1260 | 1260 | 4,302,900 | 4400 | 42 | 30 | 21 | 60 | 10 | 126 | 1517 | 1755 | 1917 |
| B750FTB1440 | 1440 | 4,917,600 | 5070 | 48 | 30 | 24 | 60 | 10 | 144 | 1734 | 2006 | 2190 |
| B750FTB1560 | 1560 | 5,327,400 | 5400 | 52 | 30 | 24 | 20@60, 4@90 | 10 | 156 | 1879 | 2173 | 2373 |
| B950FTB1680 | 1680 | 5,732,200 | 5900 | 56 | 30 | 24 | 16@60, 8@90 | 10 | 168 | 2023 | 2340 | 2556 |
| B950FTB1800 | 1800 | 6,147,000 | 6300 | 60 | 30 | 24 | 12@60, 12@90 | 10 | 180 | 2168 | 2507 | 2738 |
| B950FTB2040 | 2040 | 6,966,600 | 7180 | 68 | 30 | 24 | 4@60, 20@90 | 10 | 204 | 2457 | 2841 | 3103 |

240V, 208V

| Model No. | KW | Btu/Hr | Steam #/Hr | Circuits | KW Per Circuits | Steps | KW Per Step | KW Per Element | Total # Elements | Amp 240V | Amp 208V |
|------------|------|-----------|------------|----------|-----------------|-------|-------------|----------------|------------------|----------|----------|
| B30EHB12 | 12 | 40,980 | 42 | 1 | 12 | 1 | 12 | 4 | 3 | 29 | 33 |
| B30EHB15 | 15 | 51,225 | 52 | 1 | 15 | 1 | 15 | 5 | 3 | 36 | 42 |
| B30EHB18 | 18 | 61,470 | 63 | 1 | 18 | 1 | 18 | 6 | 3 | 43 | 50 |
| B30EHB24 | 24 | 81,960 | 84 | 2 | 12 | 2 | 12 | 4 | 6 | 58 | 67 |
| B30EHB27 | 27 | 92,205 | 94 | 2 | 13.5 | 2 | 13.5 | 4.5 | 6 | 65 | 75 |
| B30EHB30 | 30 | 102,450 | 105 | 2 | 15 | 2 | 15 | 5 | 6 | 72 | 83 |
| B30EHB36 | 36 | 122,940 | 126 | 2 | 18 | 2 | 18 | 6 | 6 | 87 | 100 |
| B30EHB40.5 | 40.5 | 138,308 | 142 | 3 | 13.5 | 3 | 13.5 | 4.5 | 9 | 98 | 113 |
| B30EHB45 | 45 | 153,675 | 157 | 3 | 15 | 3 | 15 | 5 | 9 | 108 | 125 |
| B30EHB54 | 54 | 184,410 | 189 | 3 | 18 | 3 | 18 | 6 | 9 | 130 | 150 |
| B40EHB60 | 60 | 204,900 | 210 | 4 | 15 | 4 | 15 | 5 | 12 | 145 | 167 |
| B40EHB72 | 72 | 245,880 | 252 | 4 | 18 | 4 | 18 | 6 | 12 | 173 | 200 |
| B40EHB75 | 75 | 256,125 | 262 | 5 | 15 | 5 | 15 | 5 | 15 | 181 | 208 |
| B40EHB81 | 81 | 276,615 | 283 | 5 | 3@15, 2@18 | 5 | 3@15, 2@18 | 5 & 6 | 15 | 195 | 225 |
| B40EHB90 | 90 | 307,350 | 315 | 5 | 18 | 5 | 18 | 6 | 15 | 217 | 250 |
| B40EHB96 | 96 | 327,840 | 336 | 6 | 4@18, 2@12 | 6 | 4@18, 2@12 | 6 & 4 | 18 | 231 | 266 |
| B40EHB108 | 108 | 368,820 | 378 | 6 | 18 | 6 | 18 | 6 | 18 | 260 | 300 |
| B120EHB120 | 120 | 409,800 | 420 | 7 | 6@18, 1@12 | 7 | 6@18, 1@12 | 6 & 4 | 21 | 289 | 333 |
| B120EHB144 | 144 | 491,760 | 504 | 8 | 18 | 8 | 18 | 6 | 24 | 347 | 400 |
| B120EHB150 | 150 | 512,250 | 525 | 9 | 7@18, 2@12 | 9 | 7@18, 2@12 | 6 & 4 | 27 | 361 | 417 |
| B120EHB180 | 180 | 614,700 | 630 | 10 | 18 | 10 | 18 | 6 | 30 | 434 | 500 |
| B200FTB210 | 210 | 717,150 | 735 | 12 | 11@18, 1@12 | 12 | 11@18, 1@12 | 6 & 4 | 36 | 506 | 583 |
| B300FTB240 | 240 | 819,600 | 840 | 16 | 12@18, 2@12 | 16 | 12@18, 2@12 | 6 & 4 | 48 | 578 | 666 |
| B450FTB300 | 300 | 1,024,500 | 1050 | 18 | 14@18, 4@12 | 9 | 7@36, 2@24 | 6 & 4 | 54 | 723 | 833 |

Sample Specification Electric Boilers

Steam Calculations:

| Gauge Pounds | Boiling Point of Water |
|--------------|------------------------|
| 0 | 212° F. |
| 1 | 215° F. |
| 3 | 219° F. |
| 5 | 227° F. |
| 8 | 235° F. |
| 10 | 239° F. |
| 12 | 244° F. |
| 15 | 250° F. |

Boiling point of water at various pressures

Note: For steam boilers the pounds per hour column is at 212°F. The designer must add for heating the water from starting to ending temperature.

Example:

To produce 210# per hour of steam at 15 psi with feedwater at 80°F. To heat water from 80° to 250° (15 psi steam temperature)
 $250^{\circ} - 80^{\circ} = 170^{\circ}$
 $170^{\circ} \times 210\# \text{ per hour} = 35,700 \text{ BTU per hour steam (from chart)}$
 $\underline{204,900 \text{ BTU per hour}}$
Total 240,600 BTU per hour
 Choose 72 KW — 245,880 BTU per hour

Specifying Boiler Model Number

- Select desired voltage.
 - 208, 240, 380, 415, 480 volt
- Select KW, BTU/hour, or lbs. steam/hour.
- Select horizontal or vertical configuration.
- Select any optional extras as listed on page 2.

Specifying a Cemline Boiler Model Number:

*Example:

Interpretation:

| |
|---|
| V |
|---|

| |
|----------|
| B40EHB75 |
|----------|

| |
|----|
| C3 |
|----|

| |
|----|
| RL |
|----|

| |
|---|
| 1 |
|---|

| |
|---|
| 2 |
|---|

| |
|---|
| 3 |
|---|

| |
|---|
| 4 |
|---|

- "V" for vertical configuration.
"H" for horizontal configuration.
- Cemline Boiler Number.
- Symbol designating voltage — select from code below:

| Voltage | Phase | Code |
|---------|-------|------|
| 208 | 1 | BY1 |
| 208 | 3 | BY3 |
| 240 | 1 | B1 |
| 240 | 3 | B3 |
| 480 | 1 | C1 |
| 480 | 3 | C3 |
| 415 | 1 | CY1 |
| 415 | 3 | CY3 |
| 380 | 1 | BZ1 |
| 380 | 3 | BZ3 |
| 400 | 1 | BX1 |
| 400 | 3 | BX3 |
| 600 | 3 | D3 |

- Symbol for U.L. listing.

*Example shown above is for a vertical boiler, 75 KW, 480 volt, 3 phase.





STONESTEEL is a Registered Trademark of Cemline Corporation



Specifying Electric Boilers

Electric Packaged Hot Water Boiler shall be manufactured by Cemline Corporation. Tank shall be constructed and stamped in accordance with A.S.M.E. Code for 125 lbs. working pressure, and shall be registered with the National Board of Boiler and Pressure Vessel Inspectors. The boiler shall also meet the requirements of Underwriters' Laboratories and be so labeled.

The boiler shall be furnished with 3" minimum dense fiberglass insulation and 20-gauge enameled steel jacket. Elements shall be incoloy sheathed resistance type, individually removable and replaceable.

Magnetic contactors shall be factory installed, and shall disconnect all ungrounded conductors to each heater circuit. Control circuit voltage shall be 120 volts. Factory furnished Class "J" fuses shall be provided in each ungrounded conductor of each contactor circuit.

Control circuit shall include one manual reset and one automatic reset high temperature thermostats and one automatic reset electronic low water cut-off to de-energize all contactors upon actuation.

An "on-off" control switch shall be furnished. Red indicating lights shall be provided to indicate the boiler is operating, a high temperature condition or low water condition.

Cemline Commercial Electric Boilers shall include a Boiler-trol® Solid State Electronic Sequencing Step Controller. The modulating sequencing step control with proper number of steps shall control the heater contactors with rotation options including first-on/first-off, time based - rotating stages based upon time from 1 to 40 hours, or manual rotation. Step controller shall have a digital display, LED stage indicators, outdoor reset, remote enable/disable, night setback. The digital display shall include boiler temperature, set-point temperature, and other setting information.

Boiler shall be factory prewired to a power distribution block ready for connection to external power supply wiring. All contactors and controls (except those required to be mounted on the vessel) shall be housed in a NEMA 1 enclosure with key door lock. A Safety Door Interlock shall be provided. The Safety Door Interlock shall disable or prevent power to the boiler if the is door opened.

Boiler shall have a separate dial pressure gauge and A.S.M.E. rated safety relief valve. Tank shall have an accessible drain.

Boiler shall have a one-year warranty against defects in materials and workmanship.

Boiler shall be U.L. Listed

Boiler shall be Cemline Model _____. Boiler shall have _____ KW. Elements shall be designed to operate on _____ volts, _____ phase _____ cycle current with a total amp draw of _____ amps.



- www.cemline.com
- Product Sizing Programs
 - Brochures
 - I.O.M. Manuals
 - Drawings & Specifications
 - Agent Locator
 - Plant Tour

©2024 Cemline Corporation All Rights Reserved.

All trademarks on this brochure are the property of Cemline Corporation, unless otherwise noted or in any other way set forth as a third party rights. Unauthorized use of these trademarks, as well as the materials presented on this site, is expressly prohibited and constitutes a violation of the intellectual property rights of Cemline Corporation.

Vol. 3.9



Scan to view our mobile web link.

CEMLINE CORPORATION

P.O. BOX 55 CHESWICK, PENNSYLVANIA 15024
Phone: (724) 274-5430 FAX: (724) 274-5448

www.cemline.com